



3 BEDROOMS

The *Birmingham*

1,650 SQ. FT.

This well-appointed ranch-style home is great for formal entertainment as well as relaxed family times. The spaciousness of the living room is enhanced by the cathedral ceiling, large windows and half wall to the dining area. For additional living space, the third bedroom can become a den or office space with French doors opening into the living room.

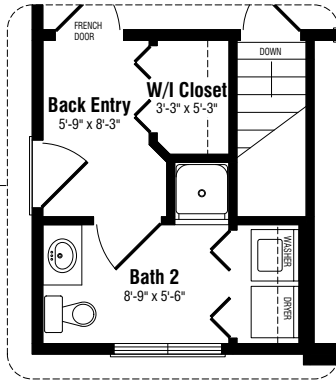
Standard features include:

- Recessed front entry
- Large formal living room
- Open-concept family room, dining room and kitchen with 4 ft. island
- Master bedroom with skylight in ensuite
- Powder room off back entry with laundry centre
- Prestige *ComfortPlus* energy efficiency package

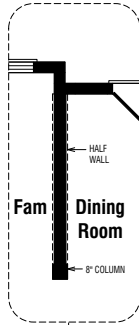
Floor plan options also offer:

- Open porch with two columns or 26 ft. porch with posts and railing
- Den with double French doors and built-in desk, in two bedroom configuration
- Alternate bathroom and closet layouts

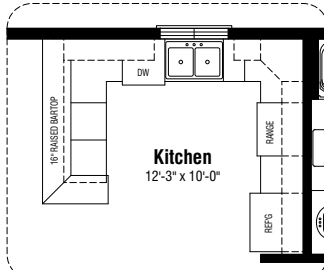
Back Entry Option



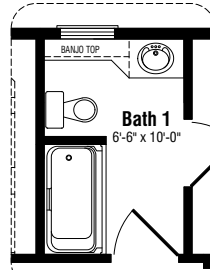
Half Wall Option



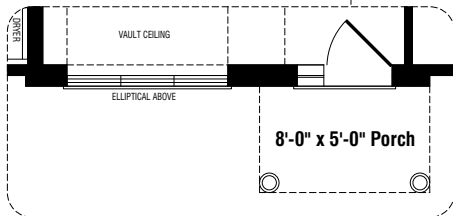
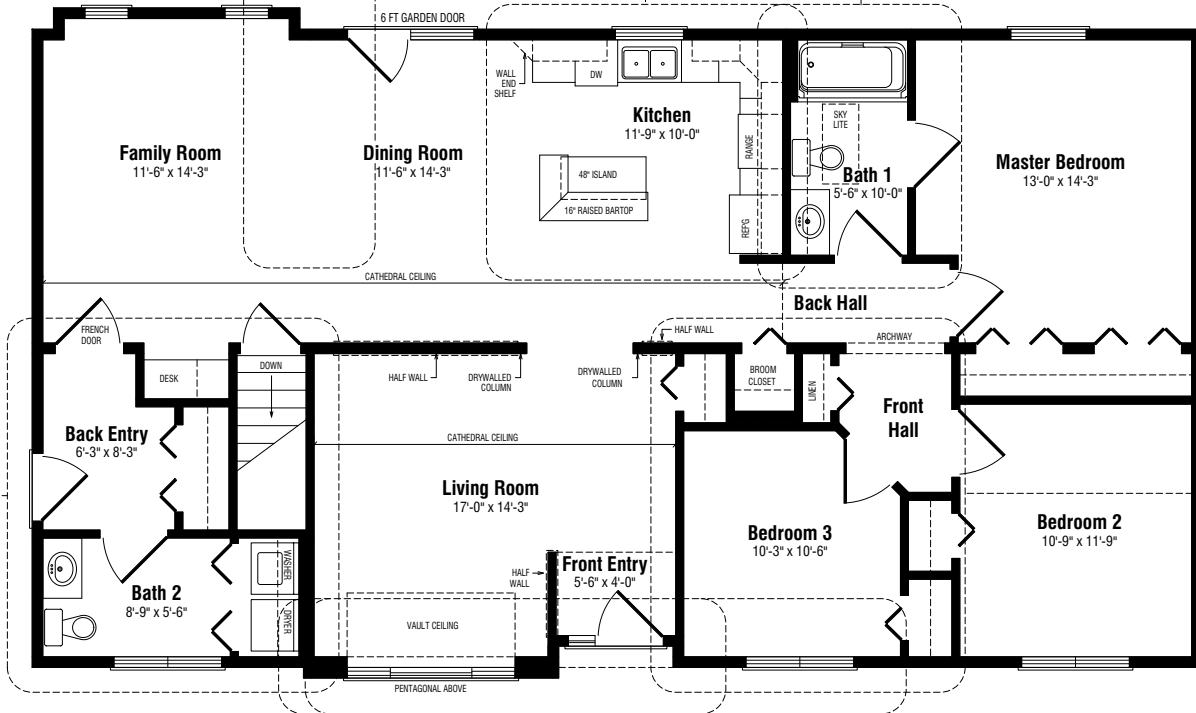
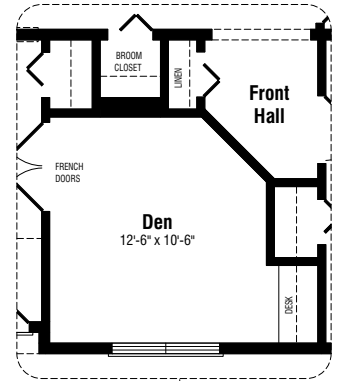
Kitchen Option



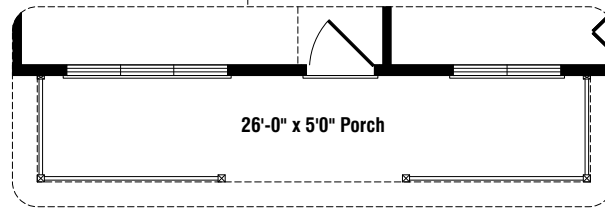
Master Bathroom Option



Den Option



Front Option – Elevation B



Front Option – Elevation C

The Birmingham

3 BEDROOMS • 1 1/2 BATHROOMS • 1,650 SQ. FT.
55' x 30'

ELEVATION B



ELEVATION C



Note: Any drawings, concepts or designs created by Prestige Homes are the sole property of Prestige Homes and are subject to copyright protection under the Canadian Intellectual Property Act. Any attempt at utilizing a design, part of a design or concept without express written permission is strictly prohibited. All dimensions are approximate. Sizes and specifications are subject to change without notice.